

**You Pick the Proppants**

**You Pick the Temperature**

**You Pick the Pressure Profile**

**Test Three Products Under  
the Same Conditions**

**You Get Engineering Answers  
Specific to  
Your Reservoir Conditions**

**Your well *deserves* the PS-50™  
Difference**

**call PropTester Today!!**

**1-888-756-2112**



**Mobile Laboratories to “Qualify Fluid  
and Proppant Performance”™**



**1722 B Huffmeister Rd.  
Cypress, TX 77429  
Phone: 888-756-2112  
Fax: 1-281-256-8883**

**WWW.PROPTESTER.COM**



**The New  
PS-50™**

**Point Specific**

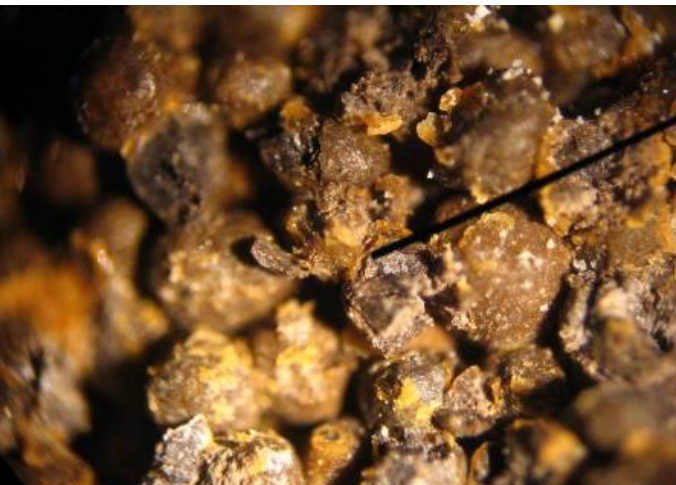
**50 Hour  
Long Term Conductivity  
Test**

**You Pick the Conditions....**

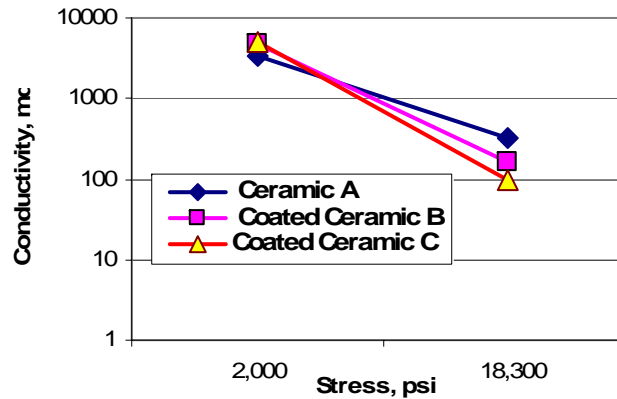
**You Pick the Products...**

**You Make Better Wells!!!**

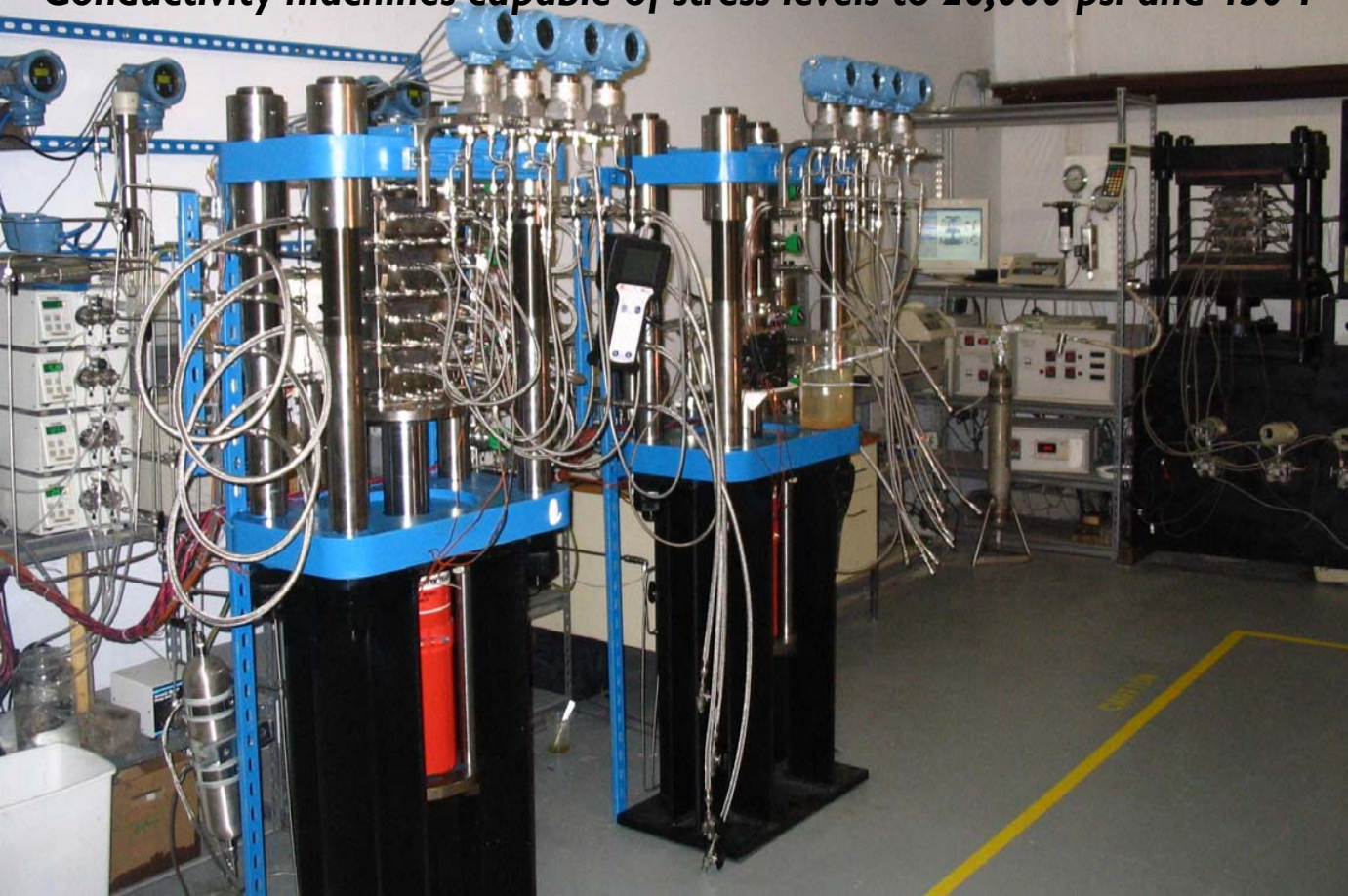
**Photomicrograph of coated ceramic subjected to closure stress levels in excess of 16,500 psi and temperature exceeding 415°F**



**PS-50 Conductivity Comparison of Three Field Samples at > 18,000 psi and Temperature in Excess of 435F**



**Conductivity machines capable of stress levels to 20,000 psi and 450°F**



In addition to conductivity testing, **PropTester®** has a full complement of equipment and services available.

\*\*\*\*\*

Full proppant analysis at our base laboratories in Cypress and Midland, TX.

\*\*\*\*\*

Mobile laboratories designed for field use to prequalify your fluid and proppant properties.

\*\*\*\*\*

HP/HT rheometer to better understand your fluid rheology profile and chemical requirements.

\*\*\*\*\*

Regained conductivity and Beta factor determination.

\*\*\*\*\*

Hot/wet crush studies specific for your reservoir conditions.

\*\*\*\*\*

Laser particle size analyzer (LPSA) for full particle size distribution for frac and gravel pack applications.